

A painting of two sunflowers. The sunflowers are the central focus, with bright yellow petals and dark green centers. The background is a rich, textured red-brown color, suggesting a field of flowers or a similar natural setting. The brushstrokes are visible, giving the painting a sense of movement and depth.

R. BENJAMIN JONES

RECORDING THE WORLD IN PAINT



R. BENJAMIN JONES
RECORDING THE WORLD IN PAINT



PRESIDENT'S STATEMENT

KATHERINE LAMBERT



JAVIER MIYARES
PRESIDENT
UNIVERSITY OF MARYLAND
UNIVERSITY COLLEGE

On behalf of University of Maryland University College (UMUC) and the 90,000 students we serve each year, let me say what an honor it is to host the exhibition *R. Benjamin Jones: Recording the World in Paint*.

A Presbyterian minister before becoming a full-time artist, Jones used his masterful command of color and light to record his environment in remarkable detail. His work evinces a love for and sensitivity to the world around him and the people and animals in it. As one of his close friends put it, his paintings and drawings “represent the connection of art with the human soul.”

Exhibitions such as this are a testimony to the ways that our Arts Program aligns with and supports our mission as an institution that has focused for more than 70 years on teaching and learning. Our art collection—which now includes almost 3,000 individual works—is on regular display, free of charge, in our various facilities, in our gallery spaces, and in public exhibits. It is just one more way that we seek to inspire students and other members of our community to think—and see the world—in new and creative ways.

I hope that you enjoy this remarkable exhibition, and as always, I thank you for your continued support of the arts and our Arts Program in 2019 and beyond.

DIRECTOR'S STATEMENT

STEVEN HALPERSON



ERIC KEY
DIRECTOR, ARTS PROGRAM
UNIVERSITY OF MARYLAND
UNIVERSITY COLLEGE

Maryland realist painter R. Benjamin Jones (1936–2017) created works of art that represent what he had seen over his lifetime. As Jones stated,

“For seventy-some years, I . . . tried to use whatever talent I [had] to record the wonderful world around me with paint and brush.” Like many artists, Jones showed an interest in and talent for art at an early age but did not become a professional artist until later in life. Jones attended the Baltimore Institute of Fine Arts (now Maryland Institute College of Art), where he studied with realist master Jacque Maroger, and graduated from University of Maryland, College Park and the Pittsburgh Theological Seminary. He became an ordained Presbyterian minister in Hagerstown and used his artistic talents in the church, creating artwork for the church bulletins and drawing and painting as a form of therapy and relaxation.

Jones began painting professionally in his 40s and left behind a body of work that documented the environment in which he lived and traveled. Those works reflect his sensitivity to the environment. He captured subjects such as the Amish community of Lancaster County; the waterways of the Chesapeake Bay; and the buildings and greenery of rural Maryland, New England, and Italy. As a realist painter, Jones employed such detail that viewers could imagine that the subject was right in front of them. He brought his subjects—from flowers blowing in the wind to a rooster fluffing its feathers—to life in paint.

Jones's works are in many private collections, some of which are mentioned below, and have been shown in galleries and museum exhibitions, including those of the Washington County Museum of Fine Arts (Hagerstown) and Baltimore Museum of Art in Maryland, the Hurlbutt Gallery (now the Flinn Gallery, Greenwich) and Lockwood-Mathews Mansion Museum (Norwalk) in Connecticut, and the Smithsonian Institution in Washington, D.C.

Working with the painter's widow, Rebecca (Becky) H. Jones, we have identified and assembled 69 significant works that illustrate Jones's diversity and scope. On behalf of the UMUC Arts Program, I thank all the lenders for this exhibition, including Rebecca Jones, Howard and Virginia Bowen, Norman and Pamela Bradford, Greg and Terree Brncick, Leon and Ellen Catlett, George and Carol Engstrom, Sue Fiedler, Eric and Audrey Glass, James and Cindy Holzapfel, David and Jane Jones, Howard S. Kaylor, Michael and Cynthia Kelley, John and Becky Kile, Edward and Paula Lampton, Mr. and Mrs. John A. Latimer III, Stephen Link, Ann Low, Tim and Susan Noffsinger, James and Georgia Pierne, Earl and Cindy Quillen, Mrs. Theron Rinehart, Tara Rumbarger and James Schiro, John and Barbara Schnebly, Bill and Deanna Soulis, Hugh and Marty Talton, Dan and Laura Weimer, Mr. and Mrs. William Young, and the Washington County Museum of Fine Arts. Without their support, this project would not have been possible.

Additionally, I would like to thank our supporters, including the Wolpoff Family Foundation, Maryland State Arts Council, and Friends of the Arts Program at UMUC.

The UMUC Arts Program is grateful for this opportunity to expose its audience to this reflection of the world through the eyes of R. Benjamin Jones.

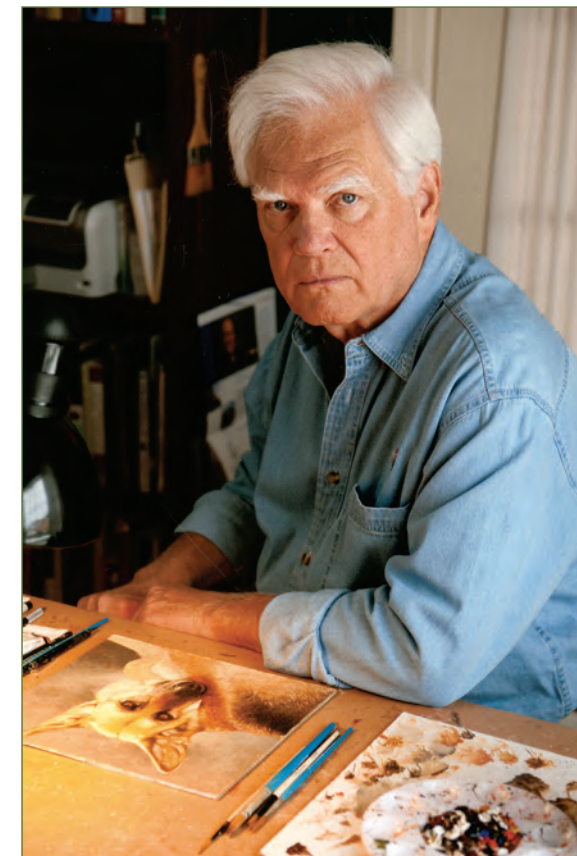
THE ARTWORK OF R. BENJAMIN JONES

BILL SOULIS, close friend of the artist

Ben Jones was an artist in the truest sense of the word. His art can be likened to poetry. A poetic expression brings us to a deeper meaning of the many perspectives of the human spirit, perspectives that we oftentimes do not appreciate until they are brought to light by the poet. And as is apparent through his artwork, Ben was a poet—one using a pencil and paint brush.

Poetry connects us to a realm that transcends the ordinary and the mundane. It is a world that cannot be described with numbers or equations or trite images. It is a sphere that resonates within the depths of our being. It is that profound universe that lies dormant in our souls, and from time to time, we require a poet to awaken its slumbering aspect. Ben was such a poet. As you traverse through this exhibit of Ben's work, I expect you will come to the same conclusion.

Great art invokes an ethereal majesty that brightens the often banal world. In his depictions of farms, fields, woods, animals, and buildings that house the tools of daily life, Ben not only brought to his art



one can see the human spirit—indomitable, strong, determined, and striving. It is in looking at these faces that we might sense our own humanity and bond with our fellow human beings, who share with us the sorrows and joys of living. One cannot ask for more from a work of art.

craftsmanship and faultless composition but also enveloped that art with a sublime radiance.

Ben's portraiture transcends skills of craft and drafting. These works represent the connection of art with the human soul. In the faces, sometimes tinged with the pains of life and the toils of work,



TOP: R. BENJAMIN JONES
ABOVE: THE ARTIST WITH
HIS WORK

Photos courtesy of Rebecca H. Jones



LEFT: JONES IN HIS HOME STUDIO
TOP: THE ARTIST WORKING IN HIS STUDIO
ABOVE: R. BENJAMIN AND REBECCA H.
JONES, 2007



Old Green
2008
acrylic on Masonite board
9½ x 12½ inches
On loan from Eric and
Audrey Glass

OLD GREEN

I cannot say why I am
attracted to old trucks, but
every time I see one, I want
to do a painting.



Four Guerneys and a Swiss
2008
acrylic on Masonite board
9 x 24 inches
On loan from the private collection
of Mrs. Theron Rinehart



Sheer Elegance
1996
acrylic on Masonite board
7 x 9 inches
On loan from James and Cindy Holzapfel



Mostly Daisies
1994
acrylic on Masonite board
35½ x 31 inches
On loan from Washington County
Museum of Fine Arts,
Gift of James and Anna Lee M. Smith



Arbor
1998
acrylic on Masonite board
34 x 48 inches
On loan from Tim and Susan Noffsinger



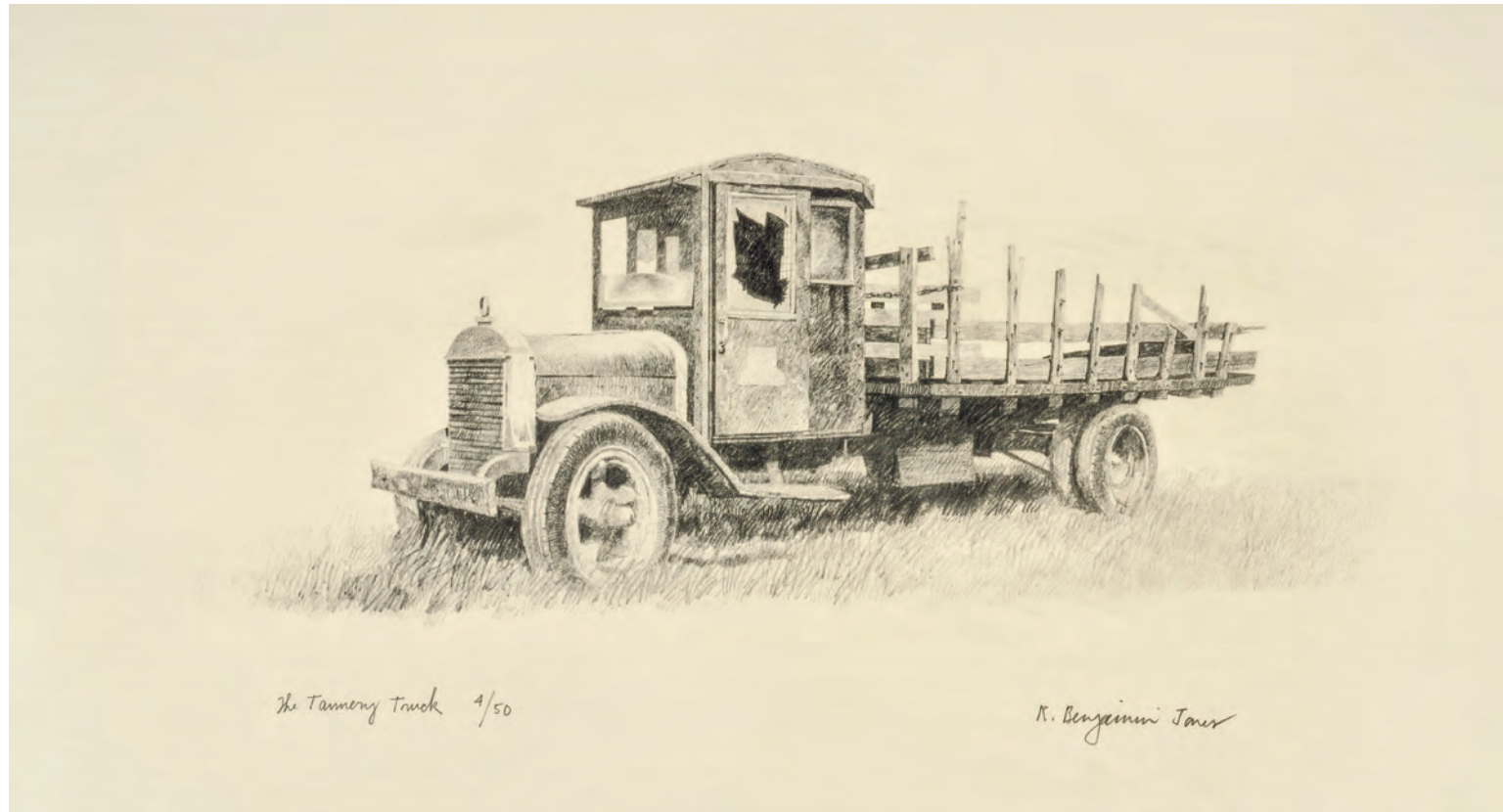
White Zinnias
2005
acrylic on Masonite board
6 x 11 inches
On loan from Mrs. Sue Fiedler



Mayme's Egg Basket
2007
acrylic on Masonite board
8 x 9 inches
On loan from Mrs. Rebecca H. Jones



Nest
2010
acrylic on Masonite board
4 x 4 inches
On loan from James and Cindy Holzapfel



A Study in Rust: Tannery Truck
1980s
print, edition 4 of 50
11 x 17½ inches
On loan from Mrs. Rebecca H. Jones



A Study in Rust: Tannery Truck
2005
acrylic on Masonite board
13 x 24 inches
On loan from Mrs. Rebecca H. Jones



Grannie and Galas
2010
acrylic on Masonite board
16 x 20 inches
On loan from Mrs. Rebecca H. Jones



Across Conococheague Creek
2006
acrylic on Masonite board
13 x 17 inches
On loan from Dr. George and
Mrs. Carol Engstrom



Storytelling
2004
acrylic on Masonite board
9 x 34 inches
On loan from the Patricia
Howes Bell Collection, owned
by Earl and Cindy Quillen

THE HILDA WILLING

Often I would go to Tilghman Island and do sketches of the boats as they came to the dock after a day's work. The boat I saw most was the skipjack named "Hilda Willing." I drew it and painted it often. . . . I have always liked the skipjacks, but they are gradually disappearing from our bay.



The Hilda Willing
2012
acrylic on Masonite board
6 x 18 inches
On loan from the collection of
John and Barbara Schnebly



Quintessential Nantucket
2015
acrylic on Masonite board
12 x 12 inches
On loan from Mrs. Rebecca H. Jones



Tiffany
1993
acrylic on paper
6½ x 4½ inches
On loan from John and Becky Kile



Sunflowers
2007
acrylic on Masonite board
6½ x 14 inches
On loan from Eric and Audrey Glass



Winter in the Country
1998
acrylic on Masonite
board
7½ x 9½ inches
On loan from Mr. and
Mrs. William Young



Rooster
2007
acrylic on Masonite board
16 x 12 inches
On loan from Leon and Ellen Catlett



Feeding
1992
acrylic on Masonite board
13½ x 40 inches
On loan from Mr. and
Mrs. Howard Bowen



Blue Ridge
2013
acrylic on Masonite board
14 x 30 inches
On loan from Drs. Michael
and Cynthia Kelley



On Monbegan Island
2007
acrylic on Masonite board
12 x 20 inches
On loan from the collection
of David and Jane Jones



Mid-Summer Nantucket
2010
acrylic on Masonite board
11 x 27 inches
On loan from Drs. Tara Rumbarger
and Jim Schiro



Farm: Making Hay
1997
acrylic on Masonite board
13 x 21 inches
On loan from Dr. George and
Mrs. Carol Engstrom



The Fjord Ponies
2004
acrylic on paper
12 x 9½ inches
On loan from Dr. George
and Mrs. Carol Engstrom



Confederate at Gettysburg
2013
acrylic on Masonite board
7½ x 6 inches
On loan from Drs. Norman
and Pamela Bradford



Work Horse
2002
acrylic on Masonite board
9 x 8 inches
On loan from Drs. Norman
and Pamela Bradford



Rest Time
1992
acrylic on paper
15 x 9 inches
On loan from Mr. and
Mrs. William Young

RAM

We have made a trip to Lancaster County most every year in March to visit the Amish community.

Over the years, I have done many portraits — plowing scenes, farms, and fields. Along a road were sheep, and I stopped to look at them. As I was looking, a ram came closer to take a look at me. What a gentle face and soft blended colors. I thought I would like to paint him.



Ram
2006
acrylic on Masonite board
11¼ x 13¼ inches
On loan from Stephen Link



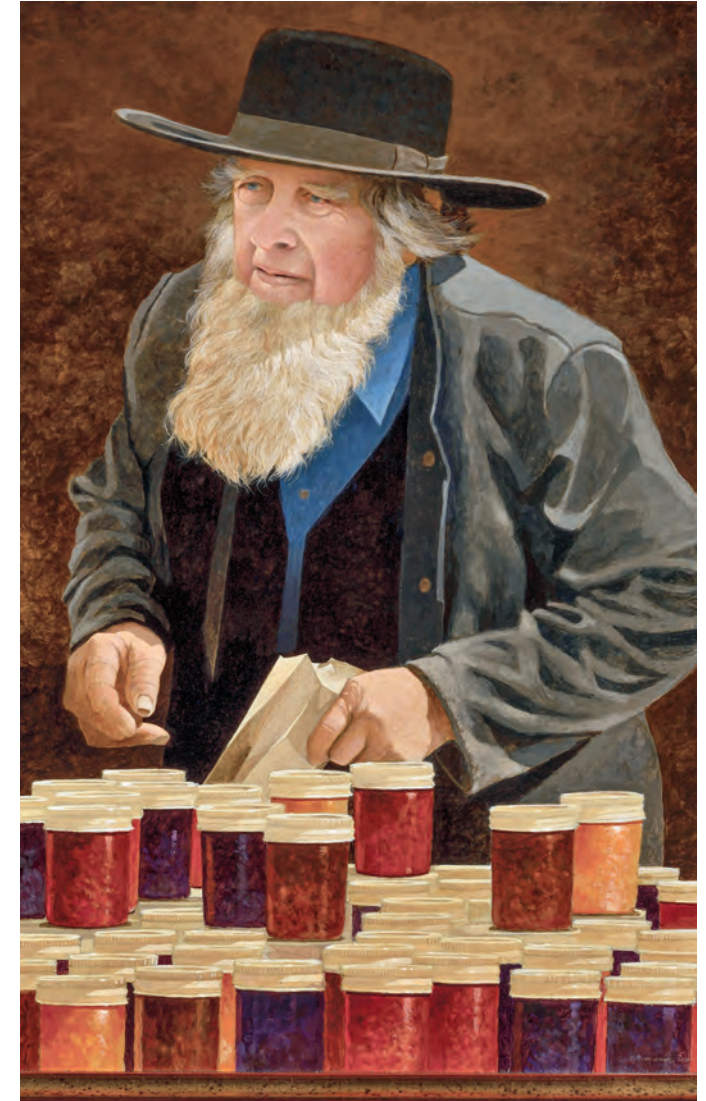
*Pennsylvania Mill Town
of My Youth*
2011
acrylic on Masonite board
14 x 28 inches
On loan from the collection
of Bill and Deanna Soulis



Herefords
2005
acrylic on Masonite board
16 x 24 inches
On loan from Mrs. Rebecca H. Jones



Holstein #12
1992
acrylic on Masonite board
16 x 24 inches
On loan from Mr. and Mrs. Howard Bowen



Jams and Jellies
2006
acrylic on Masonite board
24 x 14 inches
On loan from the Patricia
Howes Bell Collection, owned
by Earl and Cindy Quillen



Pears
2009
acrylic on Masonite board
8 x 20 inches
On loan from the collection
of Bill and Deanna Soulis



Catoctin Mountain
2013
acrylic on Masonite board
11½ x 16 inches
On loan from Mrs. Rebecca H. Jones



*Potomac Street, the Arts District,
Hagerstown, Maryland*
2015
acrylic on Masonite board
8 x 19 inches
On loan from James and
Georgia Pierne



Sheep Study for Talton Sheep
2015
pencil on paper
7 x 9 inches
On loan from Mrs. Rebecca H. Jones



Talton Sheep
2011
acrylic on Masonite board
9 x 24 inches
On loan from Dr. Hugh and
Mrs. Marty Talton



Yellow Rose
2015
acrylic on Masonite board
5½ x 5½ inches
On loan from Ann Jones Low



Hollyhock
1990s
acrylic on Masonite board
20½ x 14½ inches
On loan from Mr. and
Mrs. Howard Bowen



Alcea Rosea (Hollyhock)
2007
acrylic on Masonite board
9½ x 7½ inches
On loan from Drs. Norman
and Pamela Bradford



First Snow
2012
acrylic on Masonite board
9½ x 23½ inches
On loan from the private
collection of Mr. and
Mrs. John A. Latimer III

FIRST SNOW

For 46 years I have lived and worked in Washington County. During that time, I have tried to pay close attention to the many farms, especially the houses and barns constructed with the apparently endless amounts of native limestone. . . .

I often put the buildings and animals in falling snow.



The Ship in Mystic
2006
acrylic on Masonite board
9½ x 14½ inches
On loan from James and Cindy Holzapfel



Cottage Roses
2012
acrylic on Masonite board
10½ x 7½ inches
On loan from Drs. Norman
and Pamela Bradford

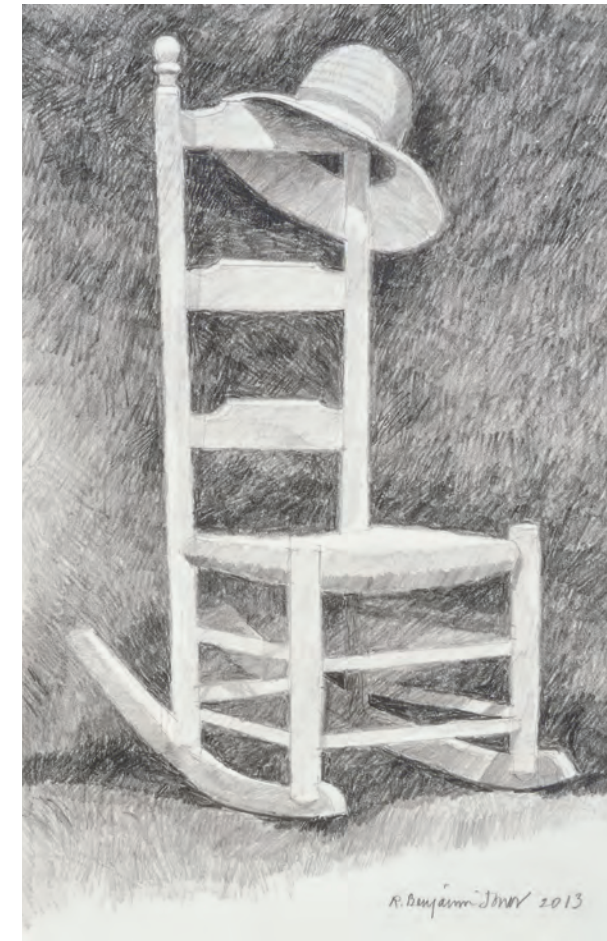


Monet's Bridge
2013
acrylic on Masonite board
7½ x 17½ inches
On loan from Drs. Tara Rumbarger
and Jim Schiro

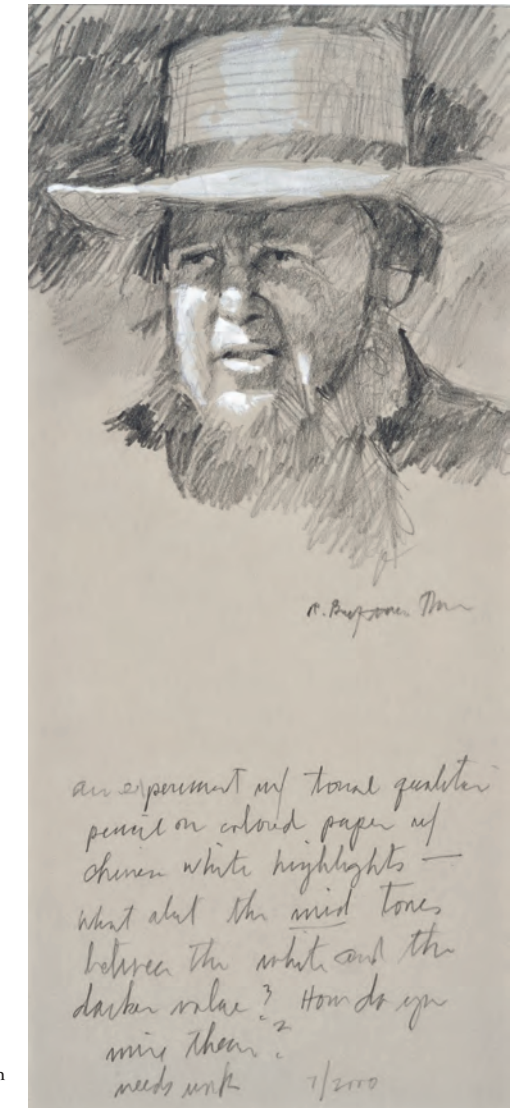


Holzapfel Hall
2014
acrylic on Masonite board
12 x 31 inches
On loan from James and Cindy Holzapfel

In 1954, University of Maryland, College Park named its horticulture building for Henry Holzapfel Jr., who had served as chairman of the Board of Regents and was known around the state for his expertise in horticulture. Holzapfel's grandson James commissioned this painting of Holzapfel Hall before the renovation of the historic structure and construction of the campus's new teaching and learning building.



Gardening Hat
2013
pencil on paper
9 x 6 inches
On loan from Mrs. Rebecca H. Jones



Man with Straw Hat
2000
pencil on paper
8 x 3½ inches
On loan from Drs. Norman and Pamela Bradford



Peonies
2015
acrylic on Masonite board
7 x 11 inches
On loan from Greg and Terree Brnck



January
1996
acrylic on Masonite board
12 x 24 inches
On loan from James and Cindy Holzapfel



July in Sconset
2013
acrylic on Masonite board
9 x 12 inches
On loan from Mrs. Rebecca H. Jones



Crewman Sketch
2012
pencil sketch on paper
9 x 7 inches
On loan from the private
collection of Mr. and
Mrs. John A. Latimer III



Crewman, "Hilda Willing"
2012
acrylic on paper
8½ x 9½ inches
On loan from Howard
S. Kaylor



Bessie's Out
1997
acrylic on Masonite board
14 x 28 inches
On loan from Leon and Ellen Catlett



Leitersburg
2007
acrylic on Masonite board
12 x 18 inches
On loan from Drs. Norman
and Pamela Bradford

BROWN SWISS #717

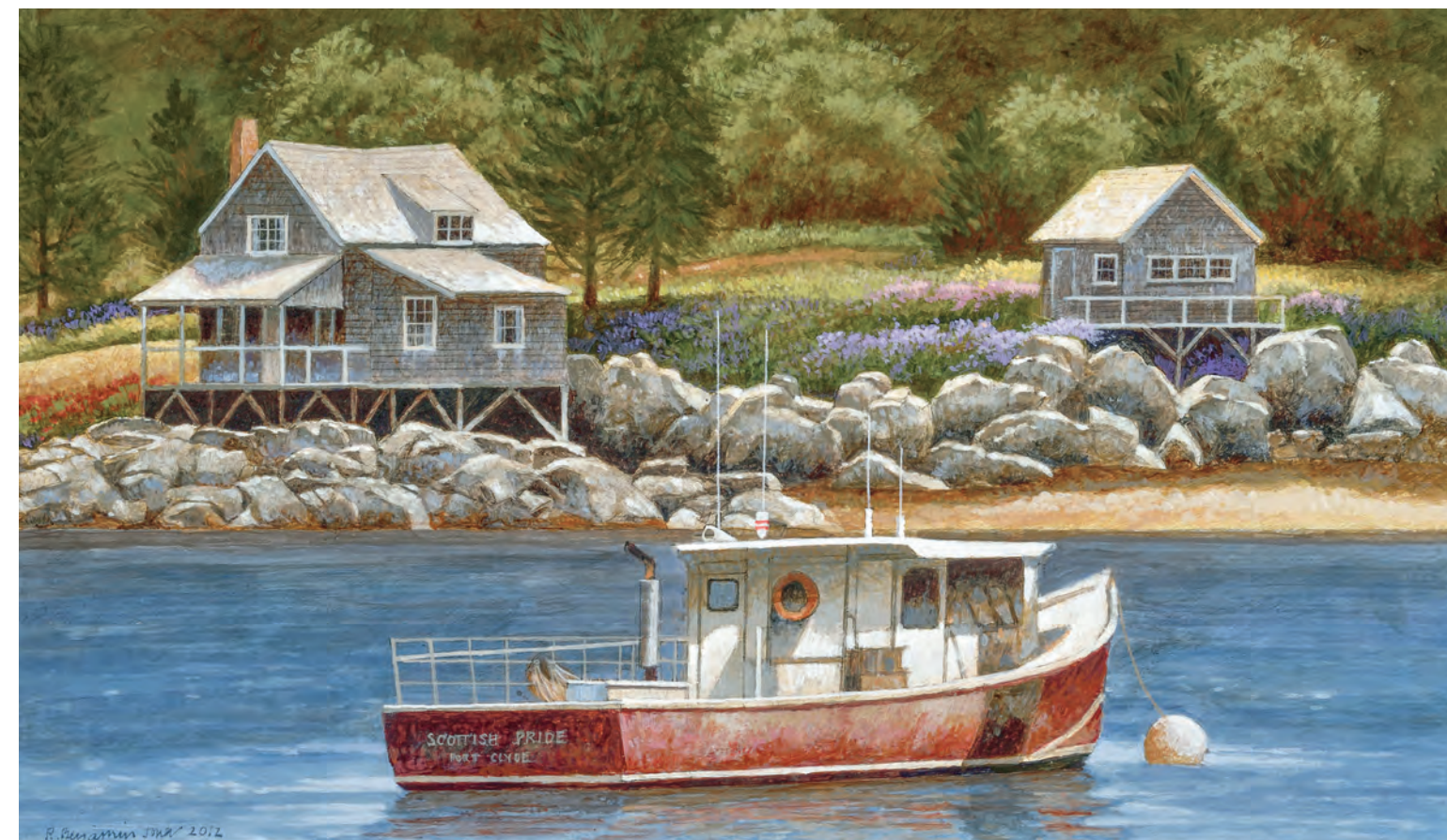
When I first began to paint farms, I had great hesitation over putting cows in the scene. Part of the problem was the difficulty in painting the Holsteins that were on nearly every farm. Then I discovered the amazing Brown Swiss. A man named John Hostetter had a farm near Leitersburg and had Brown Swiss cows. John gave me the freedom to spend many hours studying these wonderfully colored animals. For a number of years now I have painted many Brown Swiss cows.



Brown Swiss #717
2010
acrylic on Masonite board
8 x 10 inches
On loan from Mrs. Rebecca
H. Jones



*The Washington County
Museum of Fine Arts*
2009
acrylic on Masonite board
10 x 17 inches
On loan from James and Cindy Holzapfel



The Scottish Pride
2012
acrylic on Masonite board
10 x 17 inches
On loan from Mrs. Rebecca H. Jones



Breakfast at the Black Dog, MV
2013
acrylic on Masonite board
8½ x 13 inches
On loan from Mrs. Rebecca H. Jones



St. Michael's Street
1993
acrylic on Masonite board
8 x 11 inches
On Loan from Mr. and
Mrs. Howard Bowen



Best Friends
2015
acrylic on Masonite board
7½ x 9½ inches
On loan from Drs. Norman
and Pamela Bradford



Mending
2005
acrylic on Masonite board
13½ x 9½ inches
On loan from the Patricia
Howes Bell Collection, owned
by Earl and Cindy Quillen



Little Drummer Boy
2015
acrylic on paper
9 x 6 inches
On loan from Mrs. Rebecca
H. Jones



Culling Oysters on the Skipjack
"City of Crisfield" in Tangier Sound
Off Deal Island
 1992
 acrylic on Masonite board
 10 x 17 inches
 On loan from Mr. and Mrs. Howard Bowen



Monday in Lancaster County
 1999
 acrylic on Masonite board
 7½ x 19 inches
 On loan from the collection
 of Bill and Deanna Soulis



Broadfording Bridge
2011
acrylic on Masonite board
7½ x 20½ inches
On loan from the private
collection of Mr. and
Mrs. John A. Latimer III



Independence Day
1992
acrylic on paper
16 x 11 inches
On loan from the
collection of Dr. and
Mrs. Edward Lampton



Hebb Road Snow
2013
acrylic on Masonite board
6½ x 12 inches
On loan from Dan and
Laura Weimer



My Friends' Wash House
2015
acrylic on Masonite board
7½ x 9½ inches
On loan from John and
Becky Kile

EXHIBITION LIST

<i>Across Conococheague Creek</i> 2006 acrylic on Masonite board 13 x 17 inches On loan from Dr. George and Mrs. Carol Engstrom	<i>Blue Ridge</i> 2013 acrylic on Masonite board 14 x 30 inches On loan from Drs. Michael and Cynthia Kelley	<i>Confederate at Gettysburg</i> 2013 acrylic on Masonite board 7½ x 6 inches On loan from Drs. Norman and Pamela Bradford	<i>Farm: Making Hay</i> 1997 acrylic on Masonite board 13 x 21 inches On loan from Dr. George and Mrs. Carol Engstrom	<i>Gardening Hat</i> 2013 pencil on paper 9 x 6 inches On loan from Mrs. Rebecca H. Jones	<i>Holstein #12</i> 1992 acrylic on Masonite board 16 x 24 inches On loan from Mr. and Mrs. Howard Bowen	<i>January</i> 1996 acrylic on Masonite board 12 x 24 inches On loan from James and Cindy Holzapfel	<i>Mayme's Egg Basket</i> 2007 acrylic on Masonite board 8 x 9 inches On loan from Mrs. Rebecca H. Jones	<i>Mostly Daisies</i> 1994 acrylic on Masonite board 35½ x 31 inches On loan from Washington County Museum of Fine Arts, Gift of James and Anna Lee M. Smith	<i>Pears</i> 2009 acrylic on Masonite board 8 x 20 inches On loan from the collection of Bill and Deanna Soulis
<i>Alcea Rosea (Hollyhock)</i> 2007 acrylic on Masonite board 9½ x 7½ inches On loan from Drs. Norman and Pamela Bradford	<i>Breakfast at the Black Dog, MV</i> 2013 acrylic on Masonite board 8½ x 13 inches On loan from Mrs. Rebecca H. Jones	<i>Cottage Roses</i> 2012 acrylic on Masonite board 10½ x 7½ inches On loan from Drs. Norman and Pamela Bradford	<i>Feeding</i> 1992 acrylic on Masonite board 13½ x 40 inches On loan from Mr. and Mrs. Howard Bowen	<i>Grannie and Galas</i> 2010 acrylic on Masonite board 16 x 20 inches On loan from Mrs. Rebecca H. Jones	<i>Hollyhock</i> 1990s acrylic on Masonite board 20½ x 14½ inches On loan from Mr. and Mrs. Howard Bowen	<i>July in Sconset</i> 2013 acrylic on Masonite board 9 x 12 inches On loan from Mrs. Rebecca H. Jones	<i>Mending</i> 2005 acrylic on Masonite board 13½ x 9½ inches On loan from the Patricia Howes Bell Collection, owned by Earl and Cindy Quillen	<i>My Friends' Wash House</i> 2015 acrylic on Masonite board 7½ x 9½ inches On loan from John and Becky Kile	<i>Pennsylvania Mill Town of My Youth</i> 2011 acrylic on Masonite board 14 x 28 inches On loan from the collection of Bill and Deanna Soulis
<i>Arbor</i> 1998 acrylic on Masonite board 34 x 48 inches On loan from Tim and Susan Noffsinger	<i>Broadfording Bridge</i> 2011 acrylic on Masonite board 7½ x 20½ inches On loan from the private collection of Mr. and Mrs. John A. Latimer III	<i>Crewman, "Hilda Willing"</i> 2012 acrylic on paper 8½ x 9½ inches On loan from Howard S. Kaylor	<i>First Snow</i> 2012 acrylic on Masonite board 9½ x 23½ inches On loan from the private collection of Mr. and Mrs. John A. Latimer III	<i>Hebb Road Snow</i> 2013 acrylic on Masonite board 6½ x 12 inches On loan from Dan and Laura Weimer	<i>Holzapfel Hall</i> 2014 acrylic on Masonite board 12 x 31 inches On loan from James and Cindy Holzapfel	<i>Leitersburg</i> 2007 acrylic on Masonite board 12 x 18 inches On loan from Drs. Norman and Pamela Bradford	<i>Mid-Summer Nantucket</i> 2010 acrylic on Masonite board 11 x 27 inches On loan from Drs. Tara Rumbarger and Jim Schiro	<i>Peonies</i> 2015 acrylic on Masonite board 7 x 11 inches On loan from Greg and Terree Brncick	
<i>Bessie's Out</i> 1997 acrylic on Masonite board 14 x 28 inches On loan from Leon and Ellen Catlett	<i>Brown Swiss #717</i> 2010 acrylic on Masonite board 8 x 10 inches On loan from Mrs. Rebecca H. Jones	<i>Crewman Sketch</i> 2012 pencil sketch on paper 9 x 7 inches On loan from the private collection of Mr. and Mrs. John A. Latimer III	<i>The Fjord Ponies</i> 2004 acrylic on paper 12 x 9½ inches On loan from Dr. George and Mrs. Carol Engstrom	<i>Herefords</i> 2005 acrylic on Masonite board 16 x 24 inches On loan from Mrs. Rebecca H. Jones	<i>Independence Day</i> 1992 acrylic on paper 16 x 11 inches On loan from the collection of Dr. and Mrs. Edward Lampton	<i>Little Drummer Boy</i> 2015 acrylic on paper 9 x 6 inches On loan from Mrs. Rebecca H. Jones	<i>Monday in Lancaster County</i> 1999 acrylic on Masonite board 7½ x 19 inches On loan from the collection of Bill and Deanna Soulis	<i>Potomac Street, the Arts District, Hagerstown, Maryland</i> 2015 acrylic on Masonite board 8 x 19 inches On loan from James and Georgia Pierne	
<i>Best Friends</i> 2015 acrylic on Masonite board 7½ x 9½ inches On loan from Drs. Norman and Pamela Bradford	<i>Catoctin Mountain</i> 2013 acrylic on Masonite board 11½ x 16 inches On loan from Mrs. Rebecca H. Jones	<i>Culling Oysters on the Skipjack "City of Crisfield" in Tangier Sound Off Deal Island</i> 1992 acrylic on Masonite board 10 x 17 inches On loan from Mr. and Mrs. Howard Bowen	<i>Four Guernseys and a Swiss</i> 2008 acrylic on Masonite board 9 x 24 inches On loan from the private collection of Mrs. Theron Rinehart	<i>The Hilda Willing</i> 2012 acrylic on Masonite board 6 x 18 inches On loan from the collection of John and Barbara Schnebly	<i>Jams and Jellies</i> 2006 acrylic on Masonite board 24 x 14 inches On loan from the Patricia Howes Bell Collection, owned by Earl and Cindy Quillen	<i>Man with Straw Hat</i> 2000 pencil on paper 8 x 3½ inches On loan from Drs. Norman and Pamela Bradford	<i>Monet's Bridge</i> 2013 acrylic on Masonite board 7½ x 17½ inches On loan from Drs. Tara Rumbarger and Jim Schiro	<i>On Monbegan Island</i> 2007 acrylic on Masonite board 12 x 20 inches On loan from the collection of David and Jane Jones	<i>Quintessential Nantucket</i> 2015 acrylic on Masonite board 12 x 12 inches On loan from Mrs. Rebecca H. Jones

EXHIBITION LIST (CONTINUED)

<p><i>Ram</i> 2006 acrylic on Masonite board 11¼ x 13¼ inches On loan from Stephen Link</p>	<p><i>Sheer Elegance</i> 1996 acrylic on Masonite board 7 x 9 inches On loan from James and Cindy Holzapfel</p>	<p><i>A Study in Rust: Tannery Truck</i> 2005 acrylic on Masonite board 13 x 24 inches On loan from Mrs. Rebecca H. Jones</p>	<p><i>White Zinnias</i> 2005 acrylic on Masonite board 6 x 11 inches On loan from Mrs. Sue Fiedler</p>	<p>UMUC ART ADVISORY BOARD</p>	<p>Nina C. Dwyer Artist, Adjunct Professor of Art Montgomery College</p>	<p>Christopher Shields Director, Business Operations NASDAQ.com</p>	<p>David W. Bower Chief Executive Officer Data Computer Corporation of America</p>
<p><i>Rest Time</i> 1992 acrylic on paper 15 x 9 inches On loan from Mr. and Mrs. William Young</p>	<p><i>The Ship in Mystic</i> 2006 acrylic on Masonite board 9½ x 14½ inches On loan from James and Cindy Holzapfel</p>	<p><i>Sunflowers</i> 2007 acrylic on Masonite board 6½ x 14 inches On loan from Eric and Audrey Glass</p>	<p><i>Winter in the Country</i> 1998 acrylic on Masonite board 7½ x 9½ inches On loan from Mr. and Mrs. William Young</p>	<p>Javier Miyares President University of Maryland University College</p>	<p>Karin Goldstein, Honorary Member Collector and Patron of the Arts</p>	<p>Barbara Stephanic, PhD, Honorary Member Professor Emerita of Art History College of Southern Maryland</p>	<p>Karl R. Gumtow Co-Founder and Chief Executive Officer CyberPoint International, LLC</p>
<p><i>Rooster</i> 2007 acrylic on Masonite board 16 x 12 inches On loan from Leon and Ellen Catlett</p>	<p><i>St. Michael's Street</i> 1993 acrylic on Masonite board 8 x 11 inches On Loan from Mr. and Mrs. Howard Bowen</p>	<p><i>Talton Sheep</i> 2011 acrylic on Masonite board 9 x 24 inches On loan from Dr. Hugh and Mrs. Marty Talton</p>	<p><i>Work Horse</i> 2002 acrylic on Masonite board 9 x 8 inches On loan from Drs. Norman and Pamela Bradford</p>	<p>Myrtis Bedolla, Chair Owner and Founding Director Galerie Myrtis</p>	<p>Schroeder Cherry, EdD, Vice Chair Artist, Adjunct Professor of Museum Studies Morgan State University</p>	<p>Juanita Boyd Hardy, Honorary Member Director, Millennium Arts Salon Managing Principal, Tiger Management Consulting Group, LLC</p>	<p>Dianne A. Whitfield-Locke, DDS Collector and Patron of the Arts and Owner, Dianne Whitfield-Locke Dentistry</p>
<p><i>The Scottish Pride</i> 2012 acrylic on Masonite board 10 x 17 inches On loan from Mrs. Rebecca H. Jones</p>	<p><i>Storytelling</i> 2004 acrylic on Masonite board 9 x 34 inches On loan from the Patricia Howes Bell Collection, owned by Earl and Cindy Quillen</p>	<p><i>Yellow Rose</i> 2015 acrylic on Masonite board 5½ x 5½ inches On loan from Ann Jones Low</p>	<p><i>Work Horse</i> 2002 acrylic on Masonite board 9 x 8 inches On loan from Drs. Norman and Pamela Bradford</p>	<p>Eva J. Allen, PhD, Honorary Member Art Historian</p>	<p>Sharon Smith Holston, Honorary Member Artist's Representative and Co-Owner, Holston Originals</p>	<p>Sharon Wolpoff Artist and Owner Wolpoff Studios</p>	<p>Anne V. Maher, Esq. Attorney at Law Kleinfeld, Kaplan & Becker, LLP</p>
<p><i>Sheep Study for Talton Sheep</i> 2015 pencil on paper 7 x 9 inches On loan from Mrs. Rebecca H. Jones</p>	<p><i>A Study in Rust: Tannery Truck</i> 1980s print, edition 4 of 50 11 x 17½ inches On loan from Mrs. Rebecca H. Jones</p>	<p><i>Tiffany</i> 1993 acrylic on paper 6½ x 4½ inches On loan from John and Becky Kile</p>	<p><i>Yellow Rose</i> 2015 acrylic on Masonite board 5½ x 5½ inches On loan from Ann Jones Low</p>	<p>Joan Bevelaqua Artist, Adjunct Professor of Art University of Maryland University College</p>	<p>Eric Key Director, Arts Program University of Maryland University College</p>	<p>Elizabeth Zoltan, PhD Collector and Patron of the Arts</p>	<p>Sharon R. Pinder President and Chief Executive Officer Capital Region Minority Supplier Development Council</p>
	<p><i>The Washington County Museum of Fine Arts</i> 2009 acrylic on Masonite board 10 x 17 inches On loan from James and Cindy Holzapfel</p>	<p><i>Yellow Rose</i> 2015 acrylic on Masonite board 5½ x 5½ inches On loan from Ann Jones Low</p>	<p><i>Yellow Rose</i> 2015 acrylic on Masonite board 5½ x 5½ inches On loan from Ann Jones Low</p>	<p>I-Ling Chow, Honorary Member Regional President and Managing Director, Ret. Asia Bank, N.A.</p>	<p>Thomas Li, Honorary Member Chairman and Chief Executive Officer, Ret. Biotech Research Labs, Inc.</p>	<p>UMUC BOARD OF VISITORS</p>	<p>Brig. Gen. Velma L. Richardson U.S. Army, Ret. President, VLR Consulting</p>
				<p>James "Buzz" Cusack Jr. Owner and President Charles Theatre and Senator Theatre</p>	<p>David Maril, Honorary Member Journalist President, Herman Maril Foundation</p>	<p>Mark J. Gerencser, Chair Chairman of the Board CyberSpa, LLC</p>	<p>William T. "Bill" Wood, JD Founder, Wood Law Offices, LLC</p>
				<p>Seble Dawit, Esq. Director and Associate Professor Peace Studies, Goucher College</p>	<p>Afie Mirshan-Nayar, EdD Principal, Largo High School</p>	<p>Evelyn J. Bata, PhD Professor Emerita University of Maryland University College</p>	<p>Joyce M. Wright Senior Consultant Fitzgerald Consulting</p>
					<p>Amy Eva Raehse Executive Director, Vice President, and Partner Goya Contemporary Gallery</p>	<p>Joseph V. Bowen Jr. Senior Vice President, Operations, and Managing Principal, Ret. McKissack & McKissack</p>	

ABOUT UMUC

University of Maryland University College was founded more than 70 years ago specifically to serve the higher education needs of working adults and servicemembers. Today, UMUC continues that tradition online and offers more than 90 degrees, certificates, and specializations backed by the reputation of a state university and the University System of Maryland. For more information, visit umuc.edu.

ABOUT THE ARTS PROGRAM AT UMUC

Since 1978, UMUC has proudly shown works from a large collection of international and Maryland artists at its headquarters in Adelphi, Maryland, a few miles from the nation's capital. Through its Arts Program, the university provides a prestigious and wide-ranging forum for emerging and established artists and brings art to the community through special exhibitions and its own collections, which have grown to include more than 2,900 pieces of art.

Artworks are on display throughout the College Park Marriott Hotel & Conference Center at UMUC and the Administration Building in Adelphi as well as at the UMUC Academic Center at Largo. The main, lower-level gallery in Adelphi is open to the public from 9 a.m. to 9 p.m. seven days a week, and the Leroy Merritt Center for the Art of Joseph Sheppard is open to the public from 9 a.m. to 7 p.m. seven days a week. More than 75,000 students, scholars, and visitors come to the Adelphi facilities each year. Exhibitions at the UMUC Academic Center at Largo are open to visitors from 9 a.m. to 5 p.m., Monday through Friday.

ARTS PROGRAM MISSION STATEMENT

The UMUC Arts Program is dedicated to furthering the university's objectives by creating a dynamic environment in which our diverse constituents, including students and the general public, can study and learn from direct exposure to our art collections, exhibitions, and educational programs.

CONTRIBUTORS

Director, Arts Program: Eric Key

Curators: Eric Key, Jon West-Bey

Editors: Sandy Bernstein, Beth Butler, Barbara Reed

Director, Institutional Projects; Designer: Cynthia Friedman

Project Manager: Laurie Bushkoff

Production Manager: Scott Eury

Fine Arts Technician: René A. Sanjines

Administrative Assistant: Tawanna Manago

Photography: Courtesy of the artist

(except where cited internally proximate to images)

Catalog published in conjunction with the *R. Benjamin Jones:*

Recording the World in Paint exhibition

UMUC Arts Program Gallery

May 26–August 18, 2019

© 2019 University of Maryland University College.

All rights reserved. Copyright credits and attribution for certain illustrations are cited internally proximate to the illustrations.

ISBN: 13:978-0-9842265-0-4

ISBN: 10:0-98442265-0-8

ON THE COVER:

Sunflowers, 2007,
acrylic on Masonite board
6½ x 14 inches



